

B450

Video Projector
Combo VCR/DVD deck
Control System

Contact the Help Desk (x7419) for AV or computer issues
and Internet access.

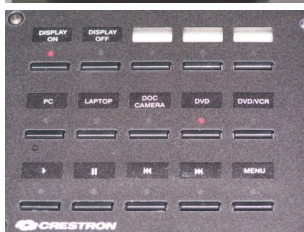
Please Do Not operate any of the equipment in this room
without prior training with the Educational Technology Center.

Use only Dri-Markers or the electronic pens on the Smart Board.



The Crestron control box is used to control most of the equipment functions. It is intended to replace all the separate remotes for the projector, DVD, and VCR.

Touch the “Display On” button to turn on the video projector (VP).



You’ll see an image begin to appear on the wall-mounted Smart Board behind you within half a minute. The red LED light above the button will blink while the projector is warming up, then will remain lit while the projector is on.

You’ll see buttons on the control box for each piece of equipment. You’ll need to push the button for the source you want to display. Pushing the “PC” button will route the computer to the projector. There are also buttons for the Document Camera, as well as the DVD player and VCR (combo deck beneath the computer LCD screen). The row of buttons below the source select buttons will operate the play features of the DVD and VCR.



Use the round “Volume” control knob on the control box to adjust the audio level from the computer or DVD/VCR.



The monitor below the control box can be turned on and used to view or cue up DVD’s or video tapes before the image is sent to the video projector.



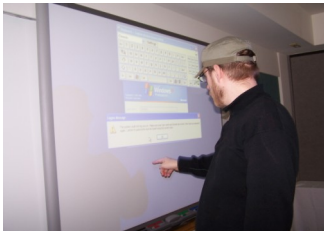
Push the “PC” button on the control box to show the computer on the projection screen. The LCD screen for the computer is not a touch-screen, so please don’t put your fingers on it!



Push the “Doc Camera” button on the control box to view the document camera through the video projector. Use the buttons and controls on the document camera platform itself to make any necessary adjustments to the image.



The Smart Board is what the video projector projects onto. It is actually an interactive extension of the computer that can be “written” on with the electronic color pens and otherwise be manipulated by physically touching it by hand, just like a touch-screen. You can project any computer application onto the screen and interact with it directly.



There are many applications that have been specifically developed for the Smart Board, and many websites devoted to various methodologies of using the Smart Board in educational environments. Please check online for more information.



To turn off the VP, press the “Display Off” button on the top row of the control box. Press the button a second time to complete the shutdown process.

Remember to Shut Down the computer and turn off whatever other equipment you had turned on.

Please Do Not leave the room without first turning off the VP and shutting down the computer.